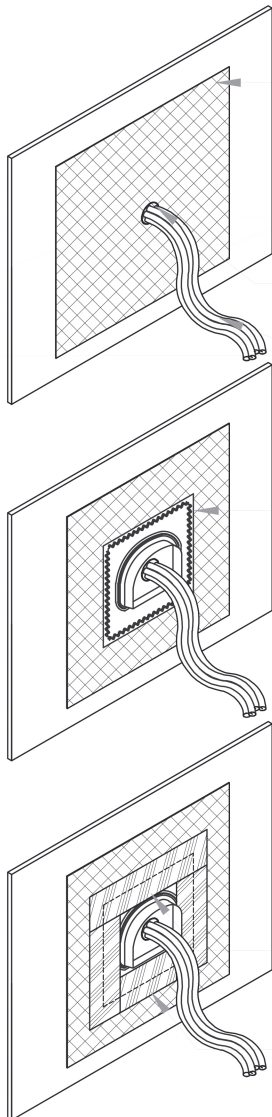




INGENII™

INGENII FLASHING Installation Instructions

INSTALLATION WITH PAPER W.R.B.



1. Install W.R.B. SA liner piece over hole (9" min. past base plate flange @ all sides). Leave bottom of liner loose to allow primary W.R.B. SA to be inserted underneath.

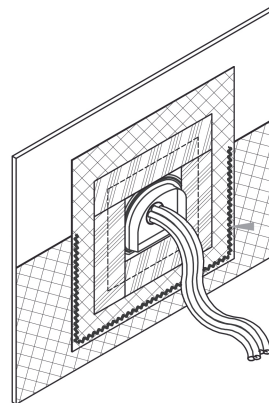
2. Install silicone sealant around bundle lineset bundle. Lineset bundle.

3. Air barrier foam from interior to seal around pipe.

4. Install base plate with silicone sealant.

6. Install self adhered flexible flashing over top of base plate flange.

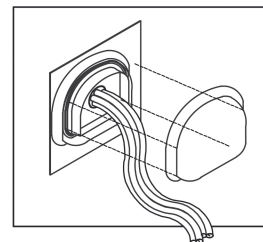
5. Install self adhered flexible flashing over base plate starting with bottom, then sides.



7. Install primary W.R.B. to structure, tucking under W.R.B. SA liner

Silicone sealant at all edges.

Attach hood to base per MFR



8. Continue installing primary W.R.B. by lapping over hood & trimming around hood*

*Maintain 6" min. horizontal and vertical laps, typical.

Silicone sealant at all edges.

6" MIN.

